

User Manual

Single monitor mount **SolidHand-GS01**

Table of contents

Specifications:.....	2
Kit contents:.....	2
Assembly:.....	3
Safety:.....	6

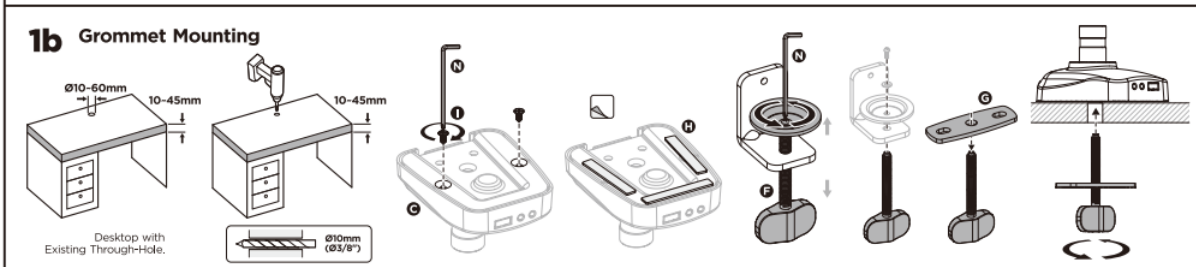
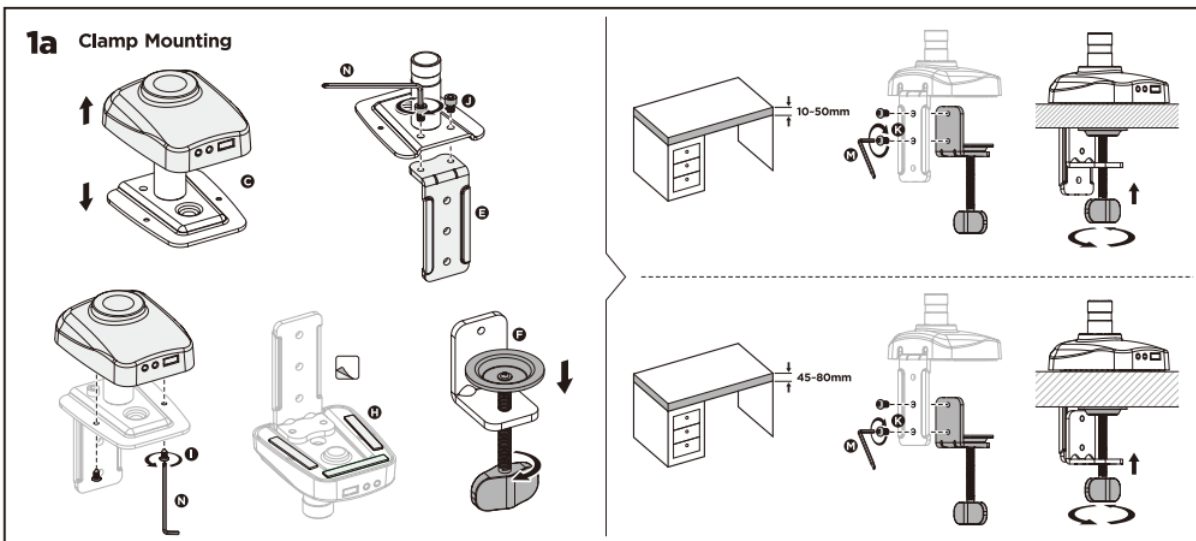
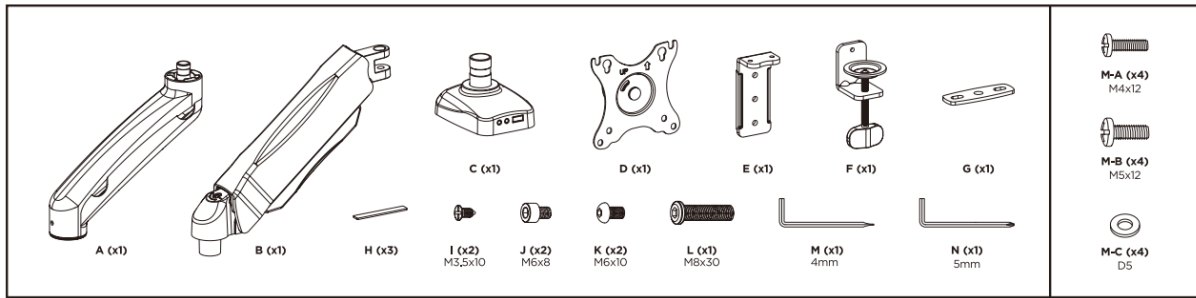
Specifications:

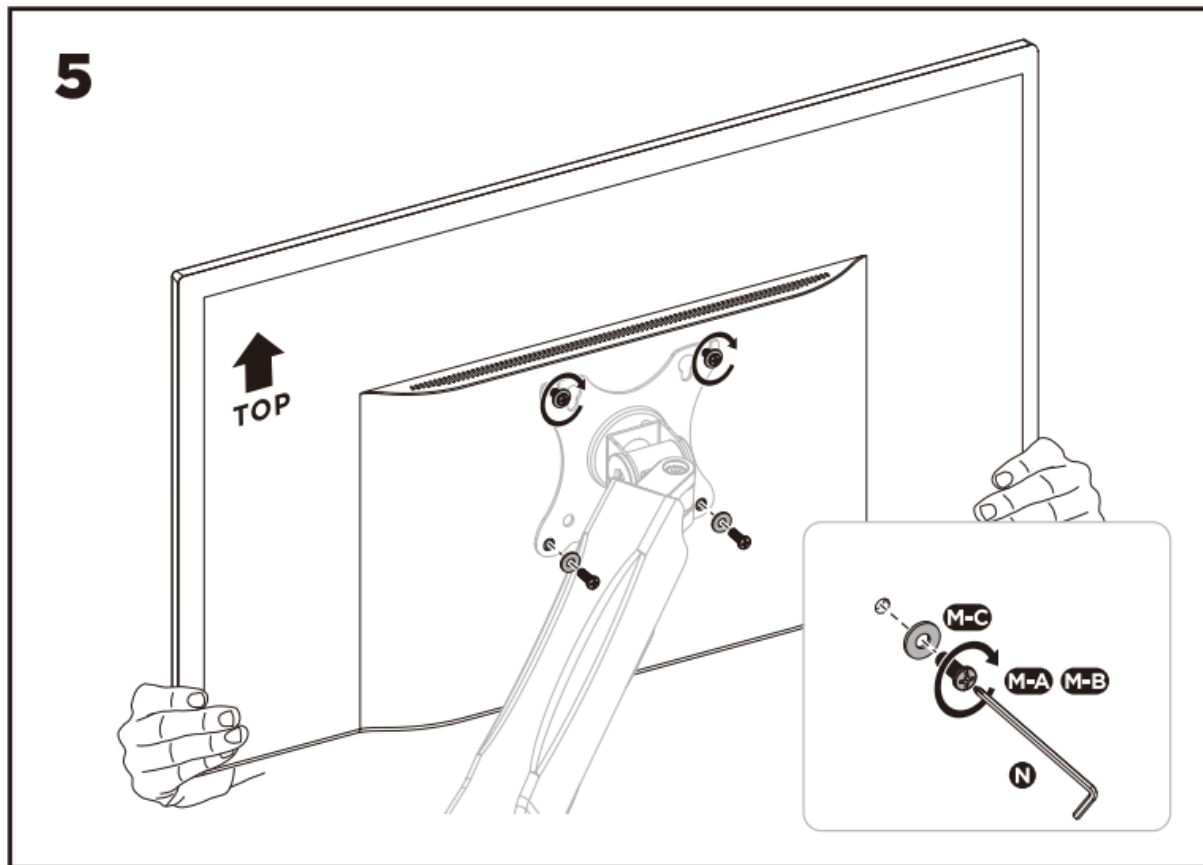
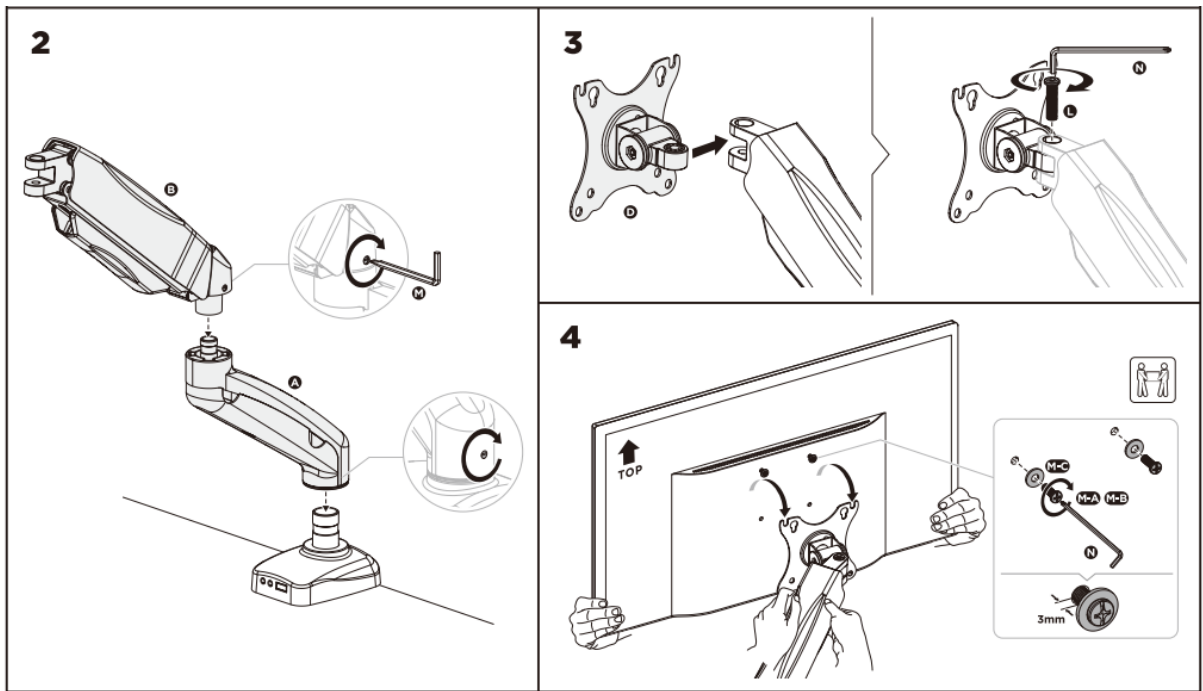
- **Warranty:** 1 year
- **Color:** Black
- **Material:** Aluminum, Steel, Plastic
- **Surface Finish:** Powder Coating
- **Number of Monitors:** 1
- **Min. monitor diagonal:** 17"
- **Max. Monitor Diagonal:** 32"
- **VESA standard:** 75x75, 100x100
- **Single Monitor Weight:** 2~9kg
- **Height adjustment:** mechanical spring assisted
- **Arm Rotation Range:** +90° ~ -90°
- **Monitor Rotation Range:** +180° ~ -180°
- **Monitor Tilt Range:** +90° ~ -45°
- **Max. arm overhang:** 450 mm
- **Installation:** Clamp, Grommet
- **Handle dimensions:** 117 x 478 x 585 mm
- **Package dimensions:** 37 x 18 x 13 cm
- **Handle weight:** 2.2 kg
- **Handle weight with packaging:** 2.6 kg

Kit contents:

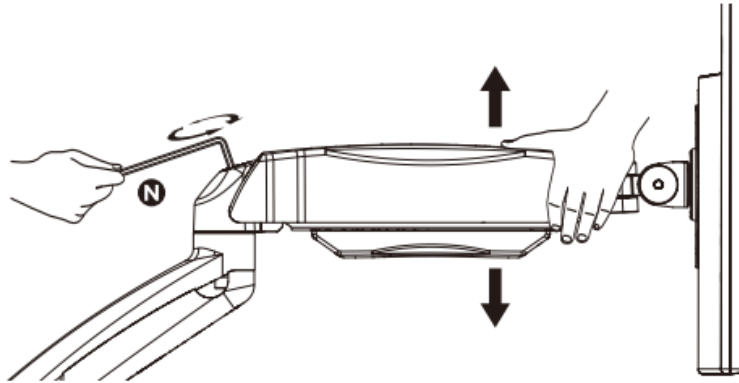
- Monitor mount,
- screws and mounting washers,
- Assembly instructions.

Assembly:





6



To properly balance the arm with monitors mounted, adjust the spring tension using the supplied Allen Key as follows:

First, position and firmly hold the arm horizontally as shown. Ask for assistance should you require it.



CAUTION: To avoid damage to monitors or mount, always keep the arm in a horizontal position while making adjustments. Again, ask for assistance if required.



If the arm **drops**, turn the adjustment screw clockwise until it stays in a horizontal position.

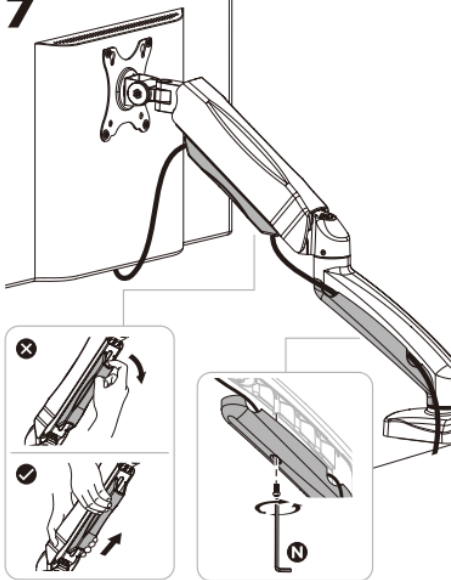


If the arm **rises**, turn the adjustment screw counter-clockwise until it stays in a horizontal position.



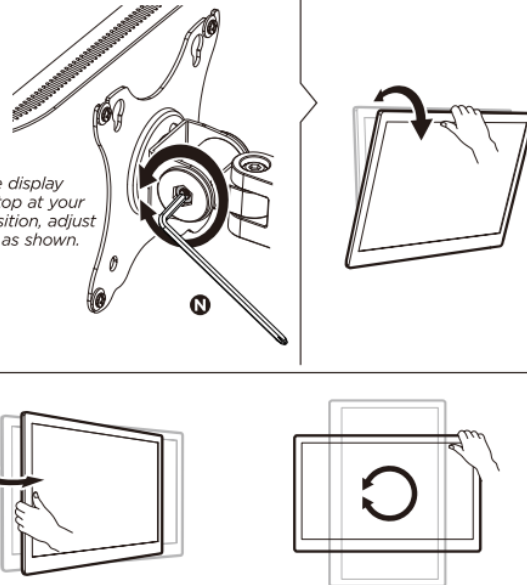
CAUTION: Do not over tighten the screws.

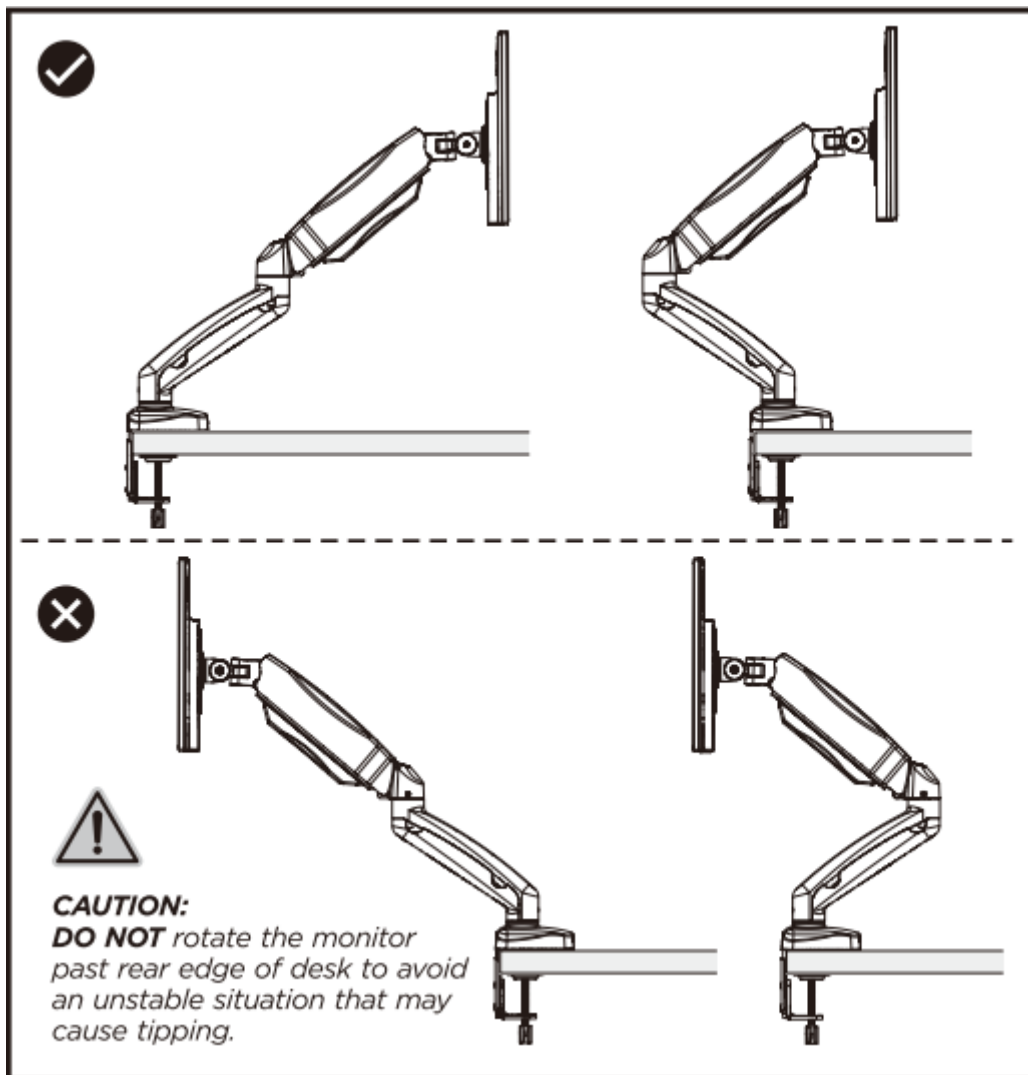
7



8

Note: If the display does not stop at your desired position, adjust the screws as shown.





Safety:

- Make sure the mounting surface is strong enough to support the product and equipment being installed.
- DO NOT EXCEED THE MAXIMUM PERMISSIBLE LOAD.
- Always use the assistance of a second person or a mechanical lifting device to safely lift and position heavy equipment.
- Tighten the screws firmly, but not overtighten. Too tight can damage the product and significantly reduce its load capacity.

- Keep a safe distance from moving parts when using the product.
- Use the product only as intended. Do not sit, stand, or climb on the product.
- The product is intended for indoor use only.
- Any modification of the structure is not permitted.
- The product may contain small elements that pose a choking hazard if swallowed. Keep out of reach of children.
- Before use, make sure that all components are securely fastened and that the instructions are fully read and understood.
- Check that the product is safe and ready for use at regular intervals (at least every three months).