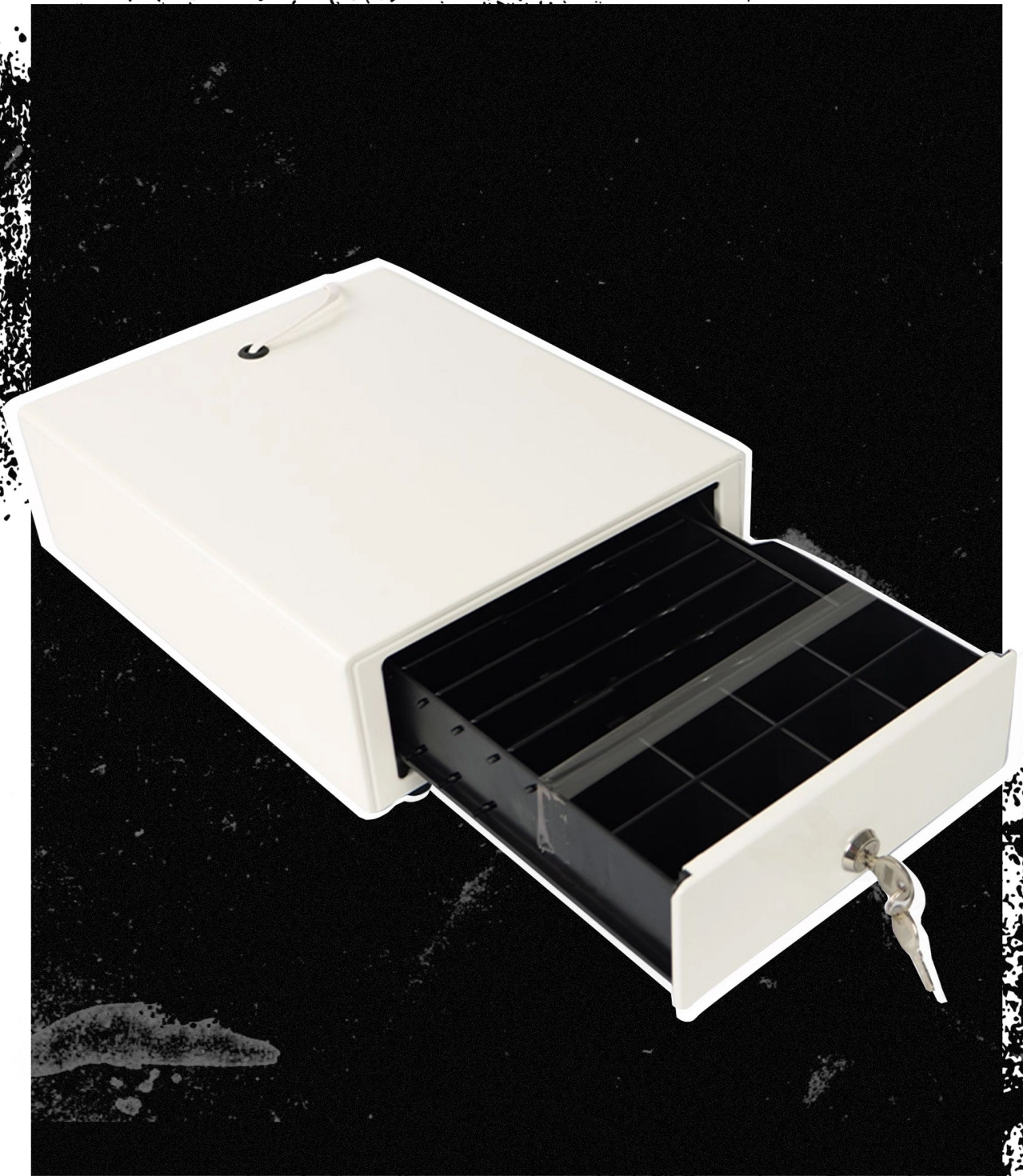


1

Compact white cash drawer SecureTill-250FW



SecureTill-250FW is a compact cash drawer featuring a stylish design in white. Inside it is an **organiser offering 4 compartments for banknotes and 8 compartments for coins**. A sturdy case made of strong steel and a lockable lock ensure safety of the cash stored inside.

Compact white cash drawer SecureTill-250FW

| | | | |
|--|---|----------------------------|-------------------------------|
| Model | SecureTill-250FW | Coil voltage | 6/12V |
| Color | white | Drawer lifespan | Up to 1,000,000 duty cycles |
| Fabrication material | steel body, frame and sliding mechanism | External dimensions | 25 (W) x 32 (L) x 10.5 (H) cm |
| Sliding system | sliding mechanism with ball bearings | Package dimensions | 33 x 33 x 10 cm |
| Number of compartments | 4 bill compartments, 8 coin compartments | Net weight | 4,7 kg |
| Dimensions of bill compartments | W 18 cm x L 3 cm x D 4 cm | | |
| Interface | RJ12 | | |
| Lock | Three-position with four functions opening/closing drawer, manual opening, electronic opening | | |

