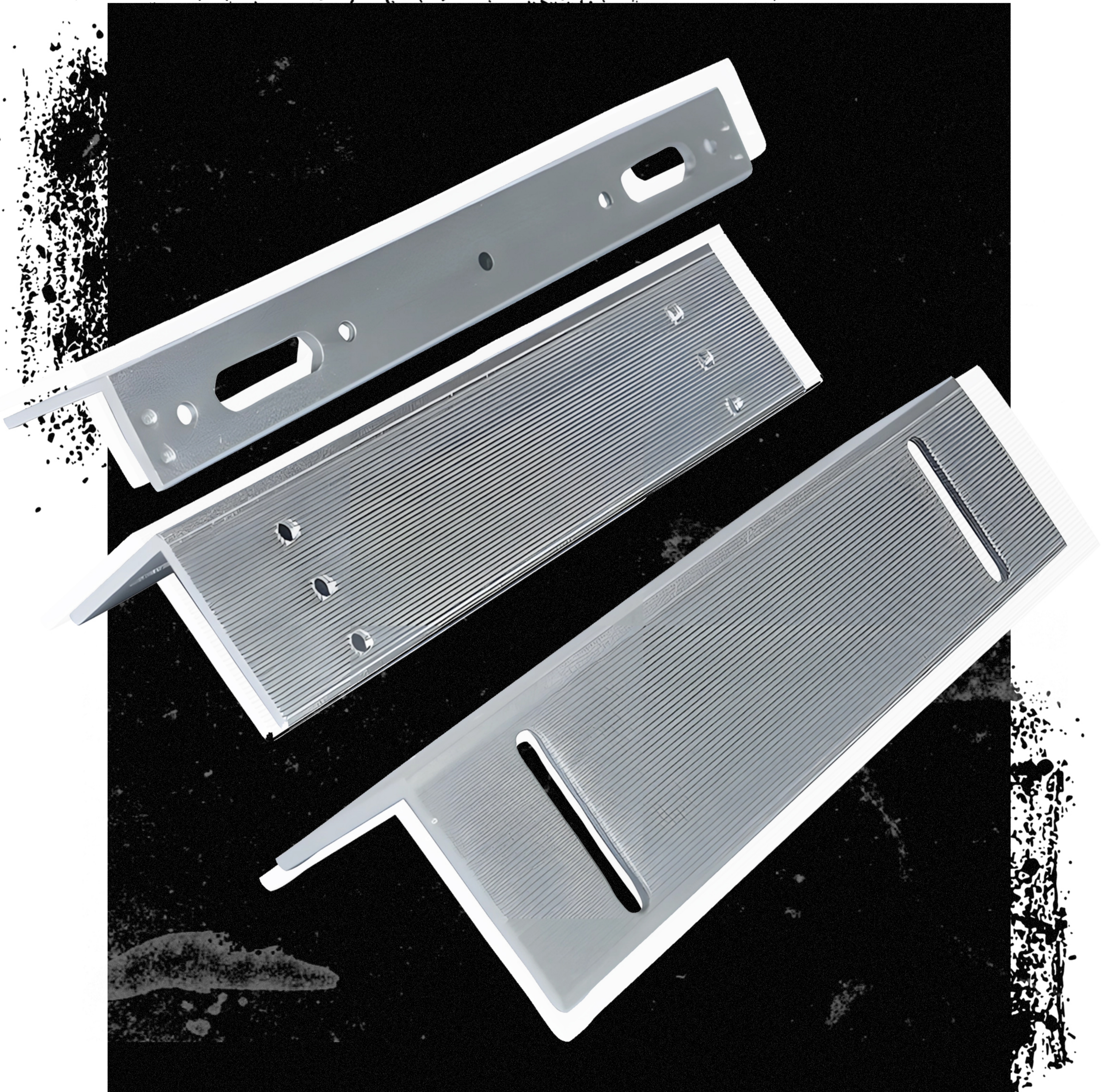


1

## Latch for mortise lock SecureEntry-SC10



**SecureEntry-SC10 is a durable and robust angle strike plate** made of strong aluminum alloy, designed for mortise locks. It is mounted on the edge of the door frame. **The lock insert is designed for locks with a sliding bolt. It is suitable for both regular and electronic locks.**

## Latch for mortise lock SecureEntry-SC10

<b>Model</b>	SecureEntry-SC10	<b>Dimensions with packaging</b>	26,8x6,5x6,5 cm
<b>Type of device</b>	latch for mortise lock, angled	<b>Product weight</b>	100 g
<b>Material</b>	aluminum alloy	<b>Weight with packaging</b>	200 g
<b>Application</b>	mortise locks, standard and electronic		
<b>Product dimensions</b>	0,06 - 0,15 mm		

