

Manual

Label printer **OPrint-XA200**

Table of contents

- Specifications: 3
- Set contents:..... 4
- Safety Notices:..... 4
- Appearance:..... 5
- Paper Roll Installation: 6
- LED and Button Instructions:.....7
- Installing the printer driver:..... 8
- Label editing software for Windows:10
- How to clean the print head: 11
- Label calibration and exception handling methods:.....12

Specifications:

- **Warranty:** 1 year
- **Resolution:** 203 dpi
- **Printing Method:** Thermal Printing
- **Max print speed:** 160 mm/s
- **Effective printing width:** 30-104mm
- **Max. print width:** 104 mm
- **Paper Type:** Continuous, Labels, Folded, Tag Paper
- **Maximum Paper Width:** 110±0.5 mm
- **Paper Thickness:** 0.06-0.3mm
- **Print reliability:** 100 km
- **Sensors:** transmissive and reflective
- **Interface:** USB
- **Printer command languages:** TSPL/CPCL/ESC/POS
- **Driver:** Win2003, Win XP, Win 7, Win 8, Win 10, Win 11, MACOS
- **Compatible OS:** Windows, Android and iOS
- **Operating voltage:** AC 100-240V, 50-60Hz
- **Device dimensions:** 20 x 11.5 x 10.5 cm
- **Package dimensions:** 21 x 18.5 x 12.6 cm
- **Device weight:** 0.9 kg
- **Weight with packaging:** 1.45 kg
- **Operating Temperature:** 0~45°C
- **Storage Temperature:** -20~60°C
- **Operating Humidity:** 10~80% non-condensing
- **Storage Humidity:** 5~95% non-condensing
- **Printed ID codes:** UPC-A, UPC-E, JAN13(EAN13), JAN8(EAN8), CODE39, ITF, CODABAR, CODE93, CODE128
- **2D Printed Codes:** QR, PDF417

Set contents:

- Label printer,
- power supply
- USB cable,
- Manual

Safety Notices:

This section contains important information for the safe and effective use of your printer. Please read carefully.

⚠ It is necessary to use a specific battery and a power source provided by our company.

Connecting to an improper power source may cause **fire, explosion, or damage to the printer.**

⚠ Do not open the paper-chamber cover during printing or immediately after printing.

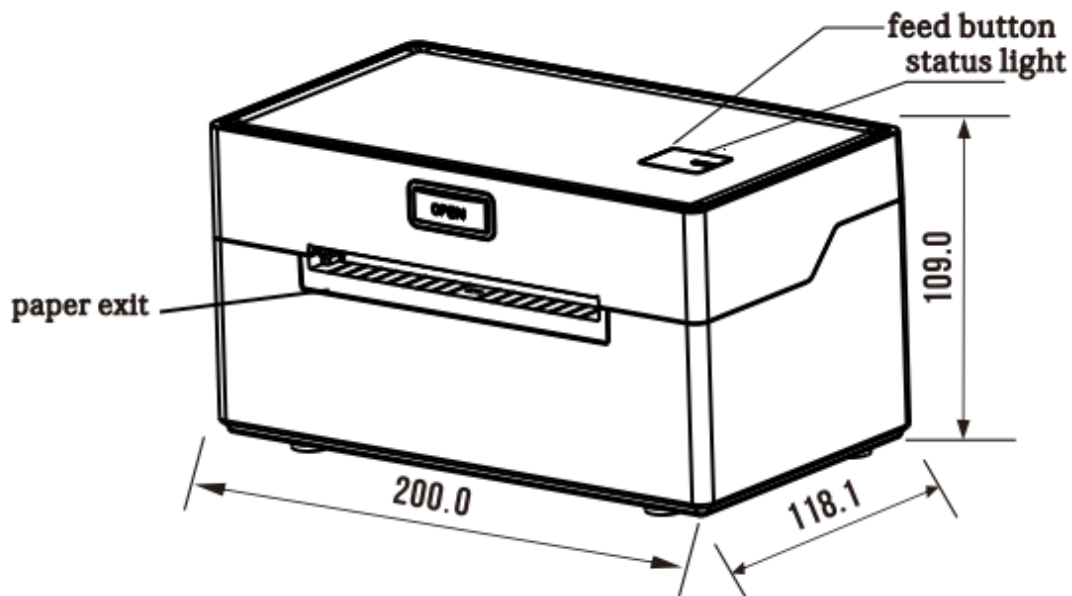
Do not touch the print head with your hand or your body, as its high temperature may cause **burns.**

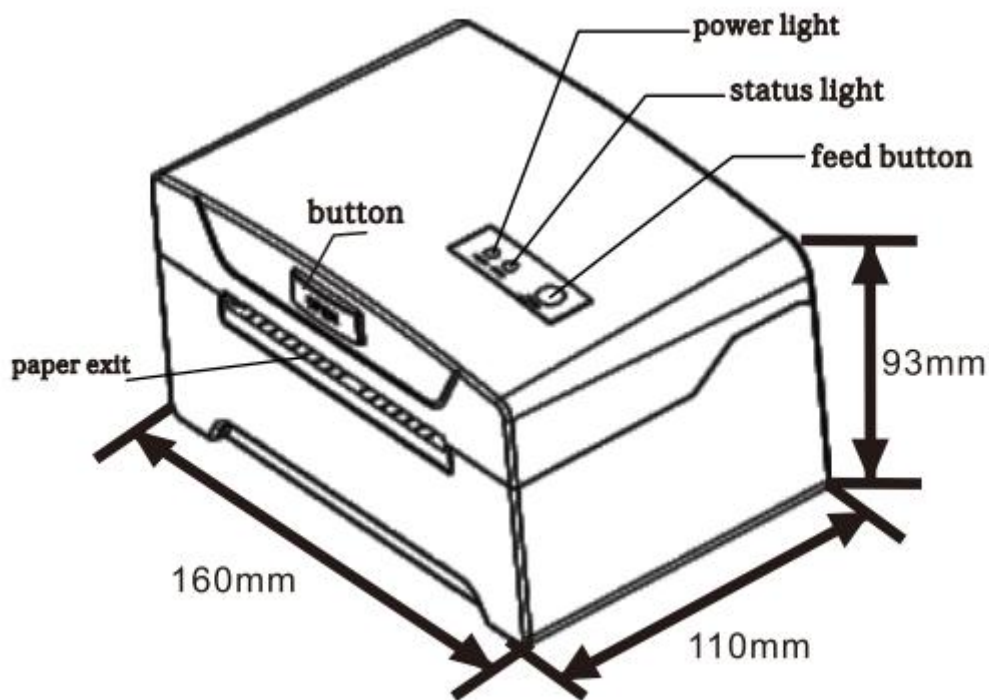
Comments:

1. **Do not store the printer in places with high temperature and humidity.**
2. **The printer's power supply requires a stable voltage between 110 and 220 V.** Do not use other devices in the same power outlet to avoid voltage fluctuations.
3. **Avoid contact of the printer with water or conductive materials (e.g. metal).** If there is water on the surface of the printer, **turn off the power immediately.**
4. **Make sure that there is always a roll of paper in the printer** to avoid damaging the print roller and print head.

5. **The printer should only be serviced and repaired by a qualified technician.** We are not responsible for improper use and unauthorized service.
6. **To ensure high-quality prints and longevity of the printer, use only high-quality paper rolls.**
7. **Keep this manual in a safe place so that** it is easily accessible and can be used as a reference in the future.

Appearance:





Paper Roll Installation:

The printer uses **thermal label paper** that allows easy paper loading. It also supports various specifications of printing paper.

Thermal Paper Installation Instructions:

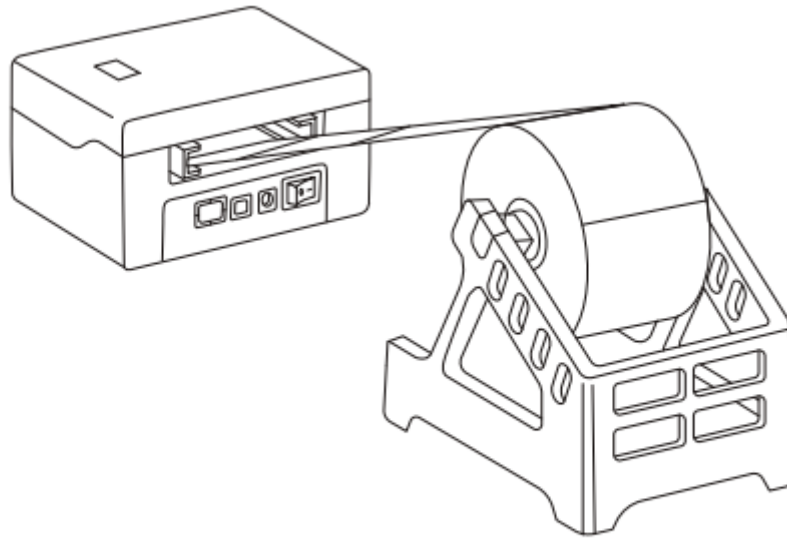
Open the top cover of the printer.

Adjust the paper guides to the width of the paper you are using.

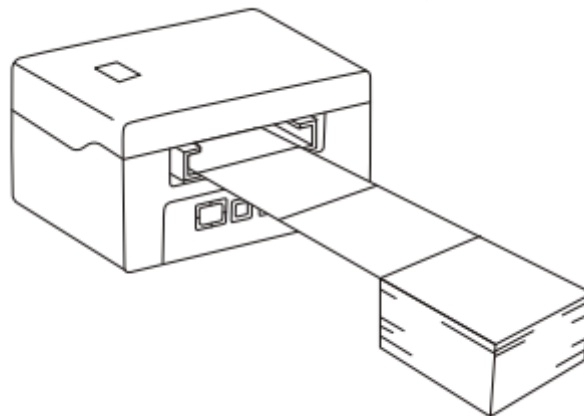
Insert the thermal paper into the paper guide.

Pull a small amount of paper out of the printer and close the cover.

Paper Roll Loading Method



Method of loading the paper used



LED and Button Instructions:

Error (Red LED)	Power (Blue LED)	Printer Status
OFF	OFF	Printer turned off
OFF	OFF/Display ON	The printer is turned on and has paper
Flashing	OFF/Display ON	The printer is turned on and has paper

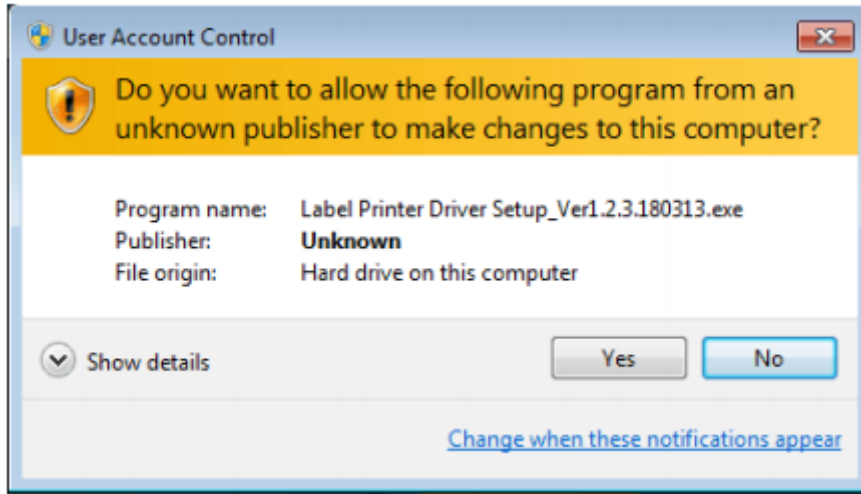
Press the power button for about 3 seconds	Turning the printer on/off
When the printer is turned on, press the FEED button	Paper Feed / Label Position Detection
Hold the FEED button when the printer is turned off, then press and hold the POWER button to turn it on. When you see the red " ERROR " LED light up, release the FEED button .	Print the printer's test page
Hold the FEED button when the printer is turned off, then press and hold the POWER button to turn it on. When you see the red " ERROR " LED light up and off, release the FEED button .	HEX Mode (Press the FEED button twice to exit HEX Mode)
Hold the FEED button when the printer is turned off, then press and hold the POWER button to turn it on. When you see the red " ERROR " LED illuminate ON-OFF-ON , release the FEED button .	Command mode switching between TSPL, CPCL and ESC/POS

Installing the printer driver:

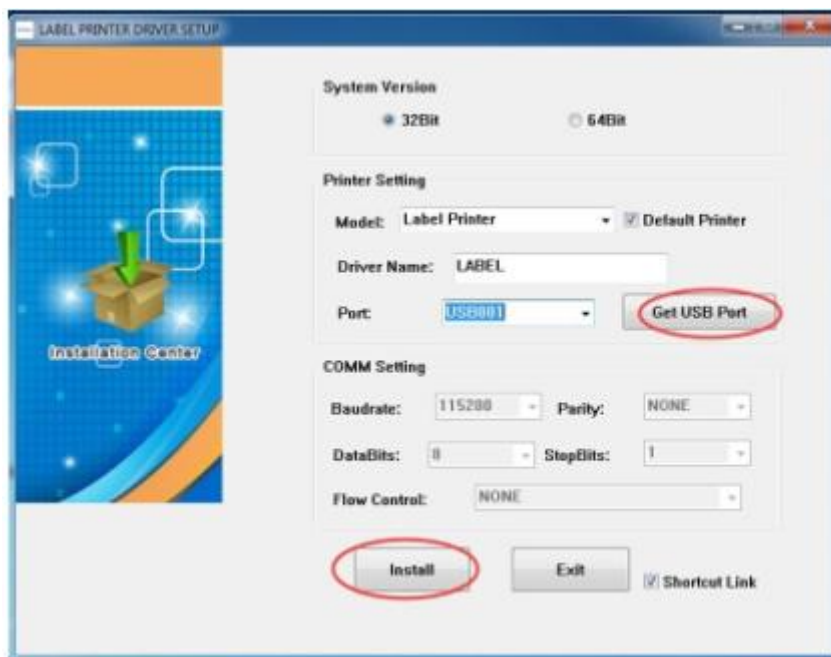
⚠ **Note:** Printing software is required for the driver to work.

Each printer comes pre-loaded with a **CD**. Open the CD and find the **label printer driver - WINDOWS**.

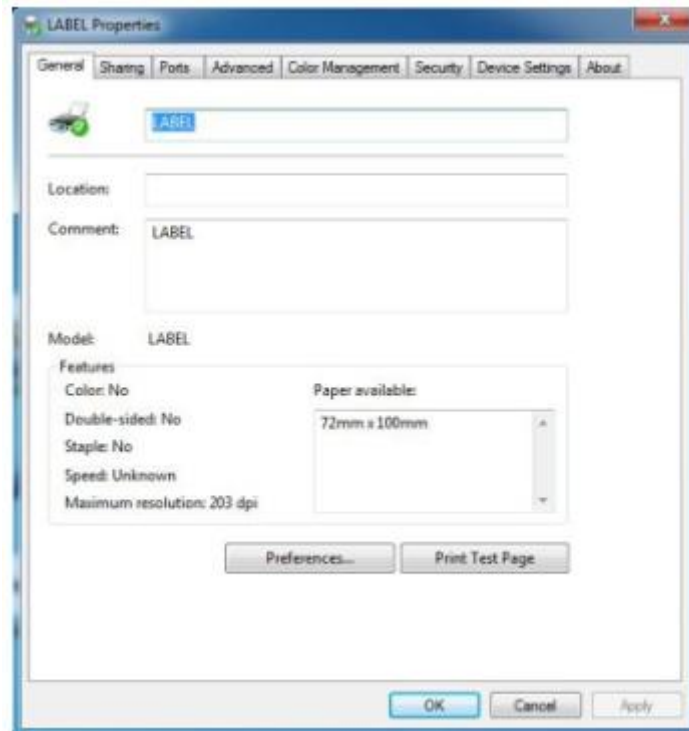
1. Click to start the driver installation.



2. **Acceptance of terms and conditions and continued installation.** Read the terms of the license agreement. Click "**Next**" to continue.



3. If the printer is connected via **USB**, click "**Get USB Port**" to automatically detect the port. For other interfaces, select the appropriate option and click "**Install Driver**".
4. If the label printer driver installation is successful, the printer properties interface will automatically appear as shown below:



Once the installation is complete, the **printer properties window will open**.

- Click **"Print Test Page"**.
- If the test page prints correctly, the installation is successful.

Note:

If the printer displays **"Printing Error"**, go back to the **"Port" tab** and select **USB0001, USB0002, or USB0003**, then try again.

Label editing software for Windows:

Available for download in the attached files.

How to clean the print head:

When should I clean my print head?

- ✓ The printer **does not print clearly** even though the thermal paper is fine.
- ✓ **Printouts are blurry** or illegible along the page.
- ✓ The printer **makes too loud noises** when feeding paper or printing.

Print head cleaning steps:

- 1. Turn off the printer** and **open the paper compartment cover**. Remove **the thermal paper roll**.
- 2.** If the printer has just finished printing, **wait for the printhead to cool down**.
- 3.** Use **a soft cotton cloth soaked in ethanol** (no dripping) and **gently clean the printhead**, removing dust and dirt.
- 4.** Wait for the **ethanol to evaporate completely**, then **put the roll of paper back into the printer**. Close the lid and **print a test page**.

Comments:

- ⚠ **When maintaining the printer, make sure that it is turned off.**
- ⚠ **Do not use metal tools (e.g., tweezers)** to avoid scratching the printhead surface.
- ⚠ **Do not use gasoline, acetone, or other organic solvents** to clean the printhead.

Label calibration and exception handling methods:

Label calibration process

If the printer is **newly assembled** (e.g. after replacing the reflective sensor, updating the software), **skips paper** when changing the label size, or **continuously prints without interruption**, calibration is necessary.

How to calibrate:

- ✓ **Put the paper in the printer and turn on the machine.**
- ✓ **When the power light comes on, hold the "FEED" button for 5-6 seconds until the LED flashes and you hear a beep.**
- ✓ **Release the button, then restart the printer and perform the test.**

✦ **Note:** Calibration results may vary depending on the paper specifications.

What to do if there are errors after calibration?

1) The printer detects an error even though the paper is in the printer

- Remove the paper.
- **Turn on the printer and wait for** the red light to flash.
- **Press and hold the "FEED" button** until the red LED stops flashing and you hear a beep.
- **Release the button, wait for 2 seconds, restart the printer, and perform the test.**

2) The printer does not report an error even though there is no paper

- Remove the paper and **turn off the printer.**
- **Hold the "FEED" button for 8-10 seconds** after turning the printer back on.
- Wait for the red LED to flash and the beep sounds twice.
- **Release the button, restart the printer, and perform the test.**

Remark:

- **The first flashing and beep indicates label calibration.**
- **The second flashing and signal means the light reflection sensor is calibrated.**

⚠ If the problem persists after calibration, the retroreflective sensor should be replaced.