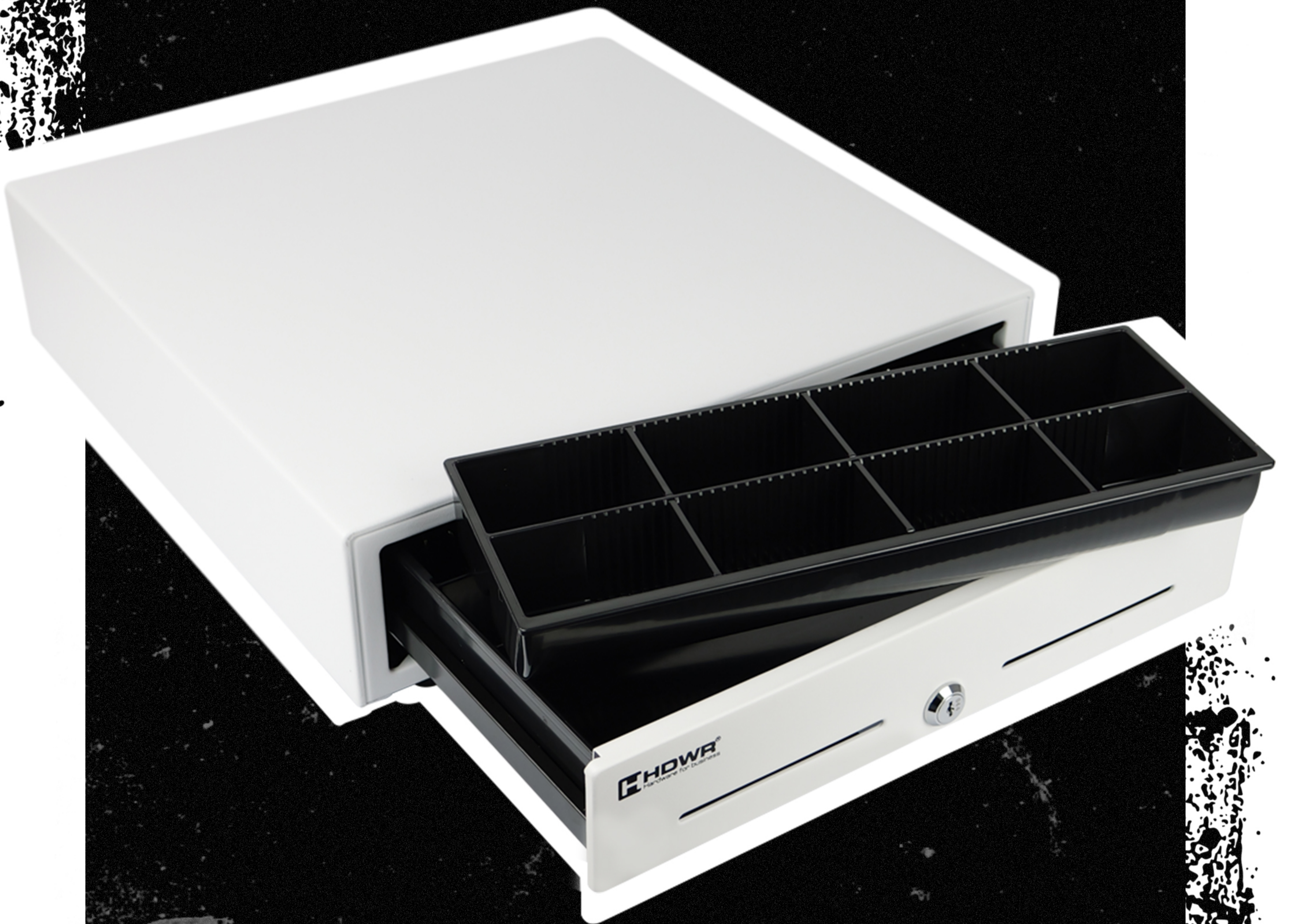


1

Large, white cash drawer HD-KR41W



The HD-KR41W cash drawer is a solid and secure cash storage solution, made of thick steel and equipped with a lock and two keys. With adjustable dividers, a **replaceable insert**, and **three opening methods**, it ensures convenience, order, and professionalism in everyday work.

2

Large, white cash drawer HD-KR41W

Model	HD-KR41W	Connector interface	RJ12
Color	white	Coil voltage	6/12V
Material	heavy cold rolled steel, SECC	Drawer lifespan	up to 1,000,000 operating cycles
Sliding system	polyurethane rollers embedded in rails	External dimensions	41 (W) x 42 (L) x 10 (H) cm
Number of compartments	5 banknote compartments with snaps, 8 coin compartments	Package dimensions	47,5 x 46,5 x 15,5 cm
Dimensions of the banknote compartments	7 (W) x 18 (L) x 3.5 (H) cm	Device weight	4,5 kg
Lock	three-position with four functions (drawer opening/closing, manual opening, electronic opening)	Weight with packaging	5 kg
Additional features	fully removable insert for banknotes and coins, two slots for other means of payment		

